

Academic Affairs Quick Reference Guide

Clinical Psychology Department

Stacey Lambert, PsyD, Vice President for Academic Affairs; Chair, Clinical Psychology Department

Joseph Toomey, PhD, Associate Chair, Clinical Psychology Department

Fred Rocco, PhD, Assistant Chair, Clinical Psychology Department

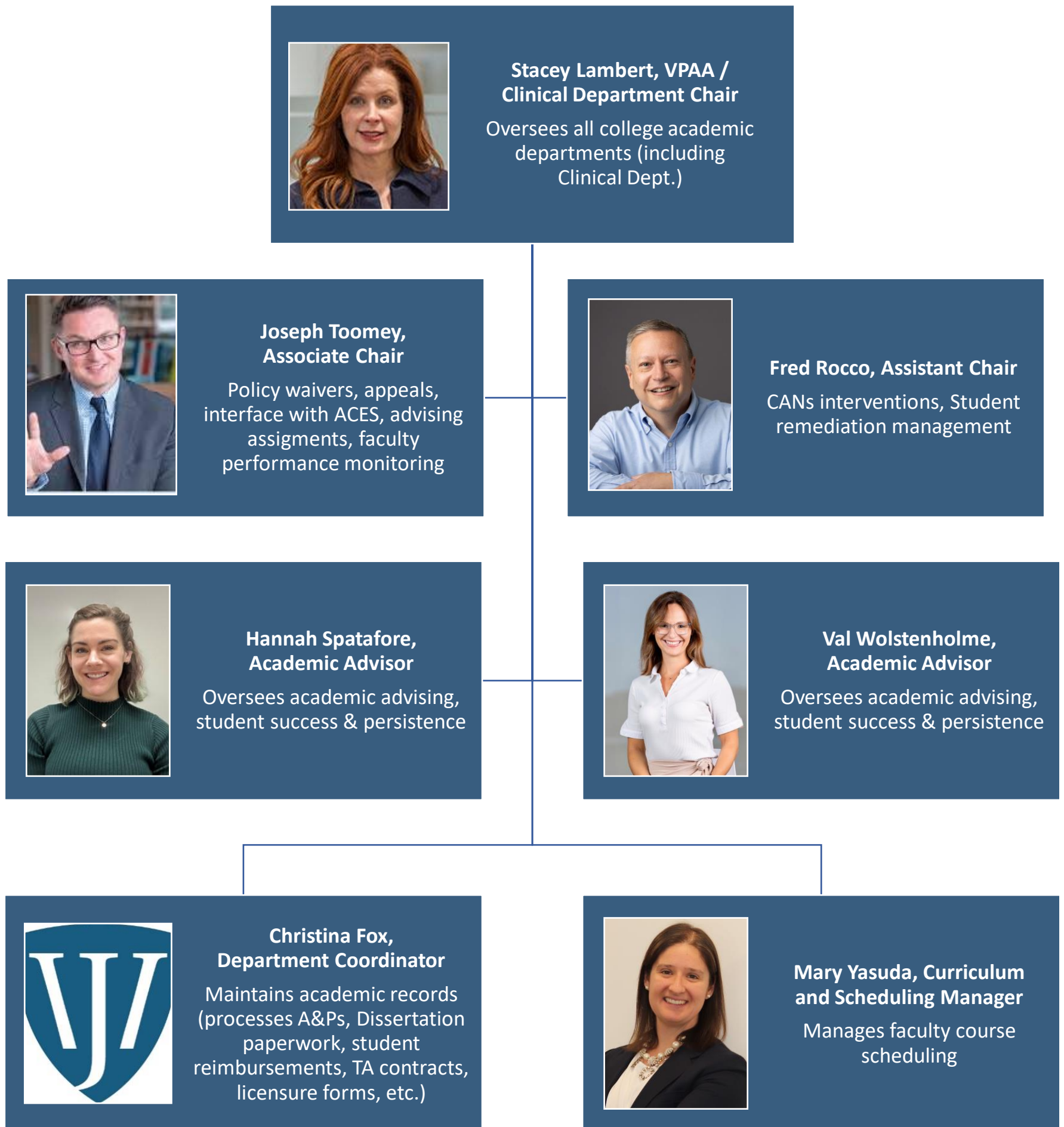
Hannah Spatafore, MS, Academic Advisor

Valerie Wolstenholme, MEd, Academic Advisor

Christina Fox, BA, Department Coordinator

Mary Yasuda, BA, Curriculum and Scheduling Manager

Clinical Department Organizational Chart



Academic Affairs Quick Reference Guide

Clinical Psychology Field Education Department

Laura Bourgeois, MA – Department Coordinator, Field Education Department

Cheryl MacDonald, MBA – Associate Director of Programming and Site Development

Mary Ann Mullin, PhD – Director of Field Education

Karen Stufflebeam, PsyD – Associate Director of Field Education

Angela Wilbur, PsyD – Director of Training



**Mary Ann Mullin, PhD,
Director of Field Education**

Oversees Advanced Practicum I & II year 3 students & year 4 students not in the part time consortium; clerkships



**Angela Wilbur, PsyD,
Director of Training**

Oversees Consortium and APA Internship students year 4&5 students; assists with Licensure



**Karen Stufflebeam, PsyD,
Associate Director of
Field Education**

Oversees Practicum year 1&2 students



**Cheryl MacDonald, MBA,
Associate Director of
Programming and Site
Development**

Questions on Time2Track, Sonia software, Site search



**Laura Bourgeois, MA, Field
Education Department
Coordinator**

Questions on eval forms, administrative issues